



WINDOW TECHNOLOGY  
DOOR TECHNOLOGY  
AUTOMATIC ENTRANCE SYSTEMS  
BUILDING MANAGEMENT SYSTEMS



WINDOW TECHNOLOGY – ORDER CATALOGUE

## The ALU-JET 06 Tilt&Turn hardware range



### Edition 06/2019

For aluminium windows and balcony-doors with sash groove 15/20

- Central locking systems
- Surface-mounted hinge-sides
- Concealed hinge-sides
- Frame parts
- Turn handles
- Accessories

Securing technology for you



# The Gretsch-Unitas group

Opening, moving, closing, securing – true to its motto "Securing technology for you", Gretsch-Unitas group provides groundbreaking solutions for window and door technology, automatic entrance systems and building management systems. With its system brands, the group delivers solutions for burglar inhibition at doors and windows, barrier-free construction, doors in escape and rescue routes through to bespoke facade solutions for projects.



## Gretsch-Unitas GmbH Baubeschläge



The group of companies is headquartered at GU in Ditzingen where development, administration and production of state-of-the-art architectural hardware for window and door technology takes place. It is equipped with various flexible assembly areas, a state-of-the-art punching shop, and a galvanising and anodising plant.

## BKS GmbH



BKS manufactures mechanical and electronic locking cylinders, locks and locking systems as well as panic locks for escape and rescue routes. Harmonised mechanical and electronic system solutions are available for access control.

## FERCO International S.A.S.



Ferco is the biggest production site for window hardware in France. Ferco, a subsidiary of the Gretsch-Unitas group of companies, also provides customer care and distribution of all group products throughout France.



**GU Automatic**



GU Automatic offers innovative, secure and reliable solutions for automatic entrance systems and door automation, revolving doors, all-glass sliding walls, security curved sliding doors and controlled physical access.

**ela-soft**



By developing GEMOS, the successful facility management and organisation system, ela-soft has become an established market and technology leader in the building services sector.



# Design freedom thanks to the modular ALU-JET 06 hardware

ALU-JET features state-of-the-art technology which means it can meet the high expectations for windows and moving facade elements in commercial construction projects. The ALU-JET 06 central locking system is the modular basis for all special designs such as Parallel-Projecting, Horizontal-Pivot or Vertical-Pivot windows, as well as Turn-Slide and Projecting Top-Hung windows. Safety through tested quality: The ALU-JET is tested according to EN 13126-8 and certified by ift according to QM 328.





# ALU-JET 06 central locking system



## Product characteristics

- Universally applicable for all opening methods
  - Uniform Ø 6 mm connecting-rod holes for all coupling points
  - Suitable for all common and special opening methods
- Use of commercially available connecting rod profiles
  - Non-handed mishandling device integrated in the corner-drive

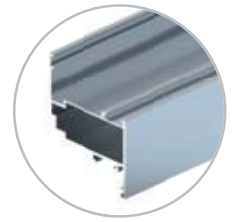


**Efficient toolless mounting**  
Efficient installation thanks to toolless mounting of corner-drives

## Product overview

Designation	Clearance [mm]	Frame grooves [mm]	Tested hardware load-bearing capacity [kg]	Sash width [mm]	Sash height [mm]
ALU-JET 06 central locking system with ALU-JET 606 surface-mounted hinge-side	11.5	10/14 12/15 14/18	80 [1] 130 [2]	410–1700	500–2800
ALU-JET 06 central locking system with ALU-JET CC606 concealed hinge-side	11.5	10/14 12/15 (on request) 14/18	150	530–1600	500–2800

[1] without additional parts | [2] with additional parts on stay-hinge  
For all stated weights and dimensions, please refer to our application diagrams and the manufacturer's profile information! For more information: [www.g-u.com](http://www.g-u.com)



# ALU-JET 606 surface-mounted hinge-side



## Product characteristics

- Universally applicable for Tilt&Turn, Tilt-First, Turn-Only and Tilt-Only sashes
- Efficient mounting through modularly preassembled modules
- Extensive range of surface finishes
- All components are non-handed
- Secure connection of stay-arm and stay-hinge (no loosening of screws)
- Comfortable 3D adjustment
- Maintenance-free stay-hinges and corner-hinges
- For profile systems with hinge-passage from 3 mm



## Consistent look

Stay-hinge and corner-hinge are flush-fitting with the sash overlap

### Product overview

Designation	Clearance [mm]	Frame grooves [mm]	Tested hardware load-bearing capacity [kg]	Sash width [mm]	Sash height [mm]
ALU-JET 606 surface-mounted hinge-side	11.5	10/14 12/15 14/18	80 [1] 130 [2]	410-1700	500-2800

[1] without additional parts | [2] with additional parts on stay-hinge  
For all stated weights and dimensions, please refer to our application diagrams and the manufacturer's profile information! For more information: [www.g-u.com](http://www.g-u.com)



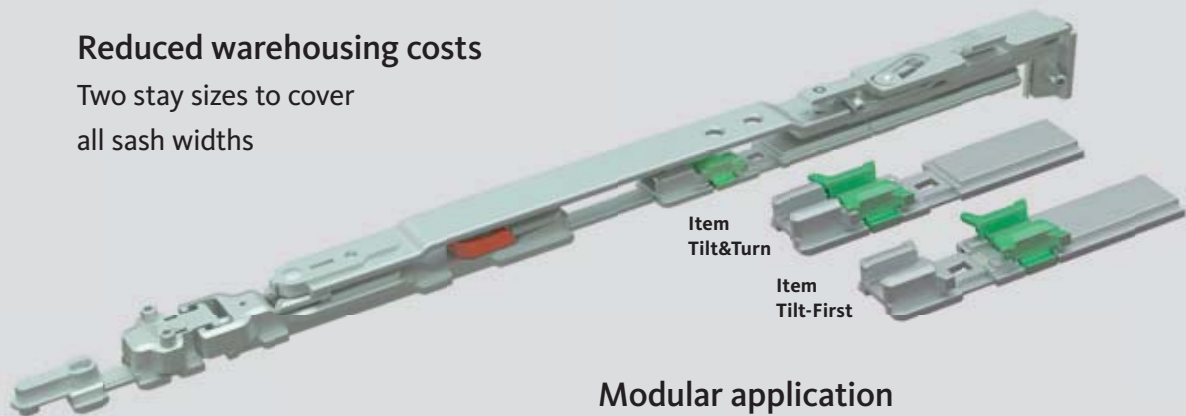


## Product characteristics

- Universally applicable for Tilt&Turn, Tilt-First, Turn-Only and Tilt-Only sashes
- Sash weights up to 150 kg possible without additional components
- For hinge-side locking on Turn-Only sashes, the central locking system can be guided through the Turn-Only stay-guide

## Reduced warehousing costs

Two stay sizes to cover all sash widths



## Modular application

Thanks to intelligent plug-in technology can be used for Tilt&Turn and Tilt-First applications

### Product overview

Designation	Clearance [mm]	Frame grooves [mm]	Tested hardware load-bearing capacity [kg]	Sash width [mm]	Sash height [mm]
ALU-JET CC606 concealed hinge-side	11.5	10/14 12/15 (on request) 14/18	150	530-1600	500-2800

For all stated weights and dimensions, please refer to our application diagrams and the manufacturer's profile information! For more information: [www.g-u.com](http://www.g-u.com)

# ALU-JET S800

The project solution for heavy facade elements up to 300 kg



## Product characteristics

- Applicable for Turn-Only and Tilt-Only sashes
- Opening angle 180°
- For profile systems with hinge-passage from 7 mm
- Extensive range of surface finishes
- Maintenance-free, high-performance polymer bearings



## Product overview

Designation	Clearance [mm]	Frame grooves [mm]	Tested hardware load-bearing capacity [kg]	Sash width [mm]	Sash height [mm]
Turn-Only hinge/Tilt-Only hinge ALU-JET S800	11.5	10/14 12/15 14/18	300	max. 1700 [1] max. 2800 [2]	max. 2800 [1] max. 1700 [2]

[1] Turn-Only sash | [2] Tilt-Only sash

For all stated weights and dimensions, please refer to our application diagrams and the manufacturer's profile information! For more information: [www.g-u.com](http://www.g-u.com)



SPACIO geared turn handle

## Geared turn handles

- Available in fork lengths of 22 mm and 33 mm
- With one carrier fork for all standard applications
- With two carrier forks for spreading function on Turn-Only sashes with 90° handle actuation angle
- Optionally with removable service handles
- Optionally tested in accordance with EN 1627



BELCANTO turn handle with insertable gear

## Turn handles in combination with insertable gear

- Extensive range of designs and surface finishes
- Optional versions:
  - lockable with key or push-button
  - lockable, for Tilt-First function
  - removable service handles
  - tested in accordance with EN 13126-3
  - tested in accordance with EN 1627
- Insertable gear:
  - optionally with mishandling device
  - optionally with anti-drill plate and connecting rod fixing for increased burglar resistance up to RC3 according to EN 1627



Rosette-free turn handle with insertable gear

## Rosette-free turn handles with insertable gear

- Turn handles without visible substructure for high design demands in projects
- Optional versions:
  - lockable with key
  - lockable, for Tilt-First function
- Installation without milling work on the aluminium profile
- Insertable gear:
  - with mishandling device

## Facades with innovative opening mechanisms



ArchitectenConsort (Peter Couwenbergh / Edjaar Bosman) | Photographer: Edjaar Bosman, NL - Rotterdam





### Parallel-Projecting hardware

The special solution for sashes with weights up to 400 kg, opening widths up to 250 mm and sash heights up to 5000 mm. Parallel-Projecting windows can be created with a comprehensive range of GU stays for all frame materials, such as timber, PVC, aluminium and timber/aluminium.

### Turn-Only hardware

Today's facades, with floor-to-ceiling glazing, are a challenge for standard hardware. Gretsch-Unitas meets these requirements with specially developed hinges for Turn-Only sashes. They are concealed in the rebate and can bear sash weights of up to 350 kg.

### Projecting Top-Hung hardware

This hardware range offers a number of different Projecting Top-Hung friction stays with opening angles from 20° to 50°. Sashes can be made to a height of 2500 mm. Projecting Top-Hung windows can be made with GU stays for all frame materials, such as timber, PVC, aluminium and timber/aluminium.

### Special constructions

Our specialists have developed innovative opening mechanisms to meet individual customer requirements regarding ventilation elements in building envelopes. We draw on our many years of experience and creative ideas to produce solutions tailored to each project.

#### Possible constructions / solutions with Parallel-Projecting windows

Designation Parallel-Projecting friction stay	Max. sash weight* [kg]	Sash height [mm]	Sash width [mm]	Opening width [mm]	
				manual	motor-driven
PAS350	100	350–750	350–2000	150	180
PAS450	100	450–1000	450–2000	180	250
PAS670	200	670–1500	670–2000	150	180
PAS930	200	930–2000	930–2000	180	250
PAS1135	200	1400–2100	1400–2000	180	250

\*Higher weights are possible if required

#### Possible constructions / solutions with Turn-Only windows

Designation	Max. sash weight [kg]	Sash height [mm]	Sash width [mm]	Opening width [°]
Concealed Turn-Only hinge	350	425–3500	350–1600	95
Stainless steel Turn-Only hinge	200	430–2800	450–1400	180

#### Possible constructions / solutions with Projecting Top-Hung windows

Designation Projecting Top-Hung friction stay	Max. sash weight [kg]	Sash height [mm]	Sash width [mm]	Opening width [°]
SKS40	40	276–640	450–2500	50
SKS50	50	640–800	450–2500	50
SKS65	65	800–1100	450–2500	50
SKS65H	100	600–1100	450–2500	30
SKS100	100	1100–1500	520–2500	45
SKS100H	100	1500–2000	520–2500	20
SKS180	180	2000–2500	520–2500	20

